

## Automated ELISA or Biochemistry Programmable Analyzer

www.awaretech.com

# ChemWell® 2910

### Programmable Open System

### Automated ELISA/Biochemistry Analyzer

**Typical Biochemistry throughput**  
**Min. and Max. pipetting volume**  
**Precision for volumes <5 µL**  
**Precision for volume >5 µL**  
**Maximum number of specimens**  
**Maximum number of reagents**  
**Standard reagent rack**  
**Reaction vessel**  
**Instrument bottles**

Up to 200 endpoint reactions per hour, up to 170 kinetic reactions per hour  
 2 µL - 1.95 mL  
 <2.5% CV  
 <1% CV  
 96 (including calibrators and controls)  
 Typically 27 to 44  
 27 positions, other configurations optional  
 Standard microwell plates or strips  
 2L wash  
 1L rinse (or second wash)  
 2L waste bottle  
 1L priming bottle

**Thermal control**  
 Incubation timing is software controlled and automatically optimized  
 Well, probe and tubing; ambient or 37°C (other options available)

**Wash head**  
**Programs**  
**Light Source**  
**Optical design**

8-probe, automatic prime and rinse  
 Wash protocols are user-programmable for aspirate, dispense, soak, mix  
 Tungsten-Xenon lamp  
 Reads bichromatic absorbance in four channels, user-selected  
 monochromatic or bichromatic results 8 position filter wheel : 340 - 700 nm  
 ± (1% of the reading +0.005A from 0 to 1.0A)  
 ± (2% of the reading from 1.0 to 3.0A)

**Photometric accuracy**

USB thumb drive and Internet upgrades  
 Windows® 7, 8,10, and 11  
 Operating System dependent\* please see Windows® system requirements  
 Single standard, factor, fixed time kinetics, kinetics by standard or factor,  
 qualitative absorbance cutoff calculations, multi-calibrator  
 point-to-point, linear regressions, log-logit, cubic spline, and nonlinear  
 regressions (curve fit)

**LIS integration**  
 LIS compatible, patient database stores test results

**Dimensions & weight**  
 92.075 cm W. x 54.61 cm D. x 47.3075 cm H. Approx. weight = 35 kg  
 36.250" W. x 21.500" D. x 18.625" H. Approx. weight = 77 lbs  
 (Allow additional 6" W for waste and wash containers)

ISO 13485:2016



**AWARENESS**  
**TECHNOLOGY, INC.**  
[www.awaretech.com](http://www.awaretech.com)

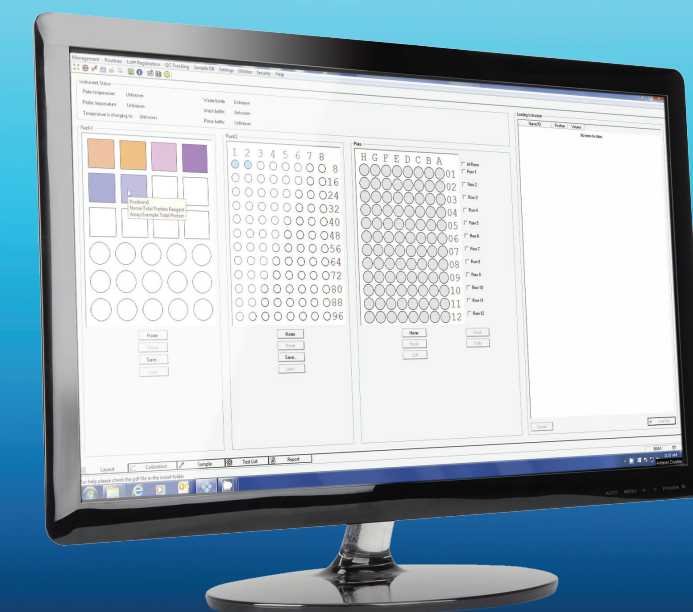
Awareness Technology, Inc. USA & International  
 tel: +1 772 283 6540 sales@awaretech.com

Awareness Technology, Inc. Europe  
 tel: +43 (0) 2236 892465 info@awaretech.eu

Awareness Technology, Inc. Asia & Africa  
 tel: +971 (06) 557 80 58 info@awaretech.com



- The ultimate in flexibility
- Included management software
- Included assay editor
- 8-position filter wheel (340 nm -700 nm)
- Biochemistry & ELISA on the same Instrument
- Vertical photometry = less reagent & sample



## ChemWell 2910, Fully Automated Computer Controlled, User Programmable, Open System Analyzer, Is Two Systems In One!

### ELISA Mode

- Analyze ELISA assays in standard 96 well coated Microplate
- Mix multiple assays on a single plate even if timing is different
- Multiple calculation modes

### Biochemistry Mode

- Analyze chemistry assays in standard 96 well uncoated microwells
- Random access kinetic and endpoint assays
- 200 Tests per hour

### ChemWell 2910 Provides:

- ◆ Ability to process microwell based ELISA or biochemistry assays using the same analyzer
- ◆ An open system with user definable ability to program any assay menu
- ◆ Customizable and expandable protocols
- ◆ Proven technology and performance - True walk away capabilities
- ◆ World class customer support
- ◆ Ease of operation through intuitive design
- ◆ User friendly Assay Editor System software that prevents process timing conflicts
- ◆ Flexible placement of reagent and samples for optimization
- ◆ Complete patient database available with search and tracking system
- ◆ Flexible reporting options including bidirectional LIS support



Optional Reagent Cooling Accessory  
Maintains reagents at 12°C to 15°C below ambient temperature

# ChemWell®

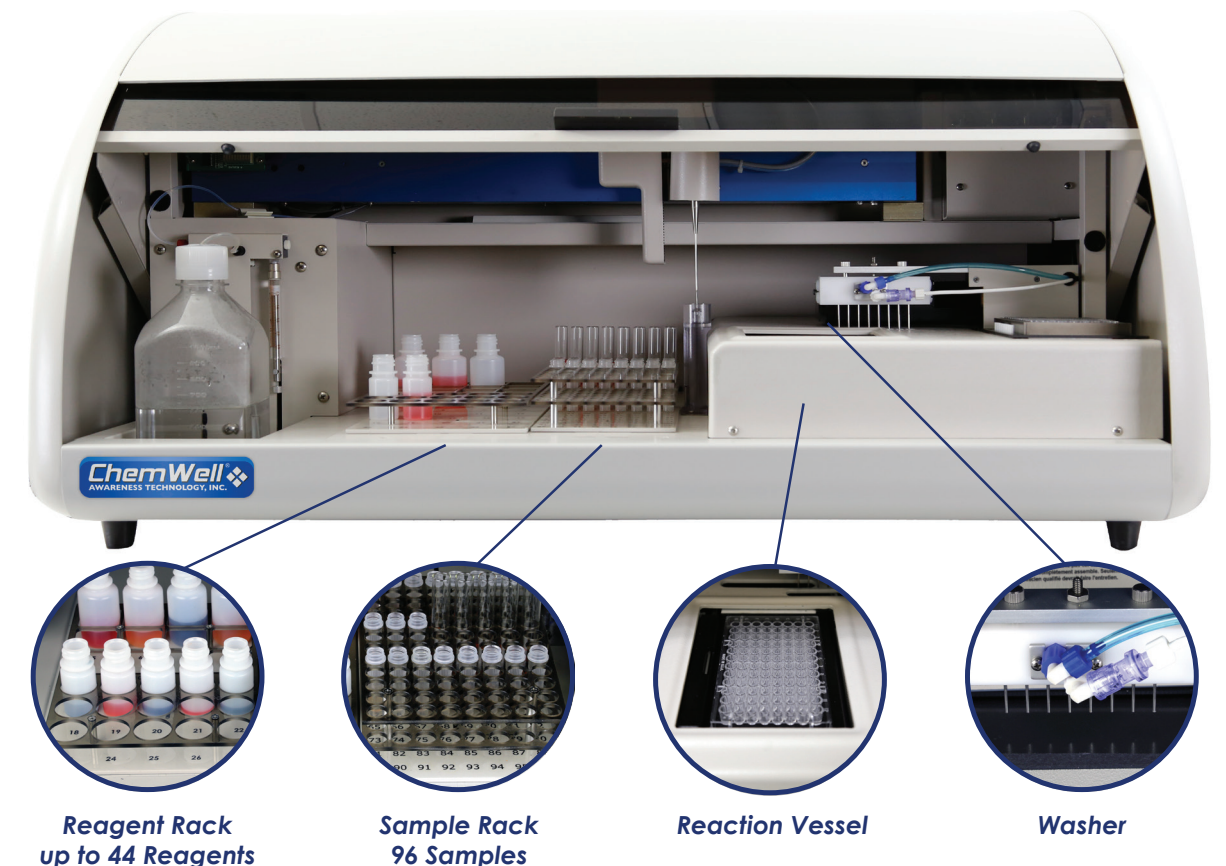
Versatile • Flexible • Reliable • Accurate • Programmable • ELISA & Biochemistry Analyzer

### The Ultimate in Flexibility

The same instrument that automatically processes microwell based ELISA tests, is also a fully automated 200 test per hour routine biochemistry analyzer. The two in one functionality makes ChemWell 2910 an ideal addition to any laboratory that is looking to maximize efficiency, savings, and improve productivity without sacrificing valuable benchtop work space.

### Key ChemWell® 2910 Features:

- ◆ On Board Pre-dilution Options in the Rack or Plate
- ◆ Fluid Handling - aspirates and dispenses from 2 µL to 1.95 mL
- ◆ On-Board programming for work flow optimization
- ◆ On-Board storage of QC, calibrator data and Levey-Jennings
- ◆ 8 Filter wheel with 340 nm – 700 nm Range
- ◆ On-Board Plate Washer, Mixer and Incubation
- ◆ Self-cleaning liquid sensing probe
- ◆ Security Lock Out Options - Data Archive - unlimited capacity
- ◆ Create a repository of programmed assays using the included assay editor



Reagent Rack  
up to 44 Reagents

Sample Rack  
96 Samples

Reaction Vessel

Washer